

Lab Three : Per Minute Access and changing the Charges

Lab Overview

In this lab you will configure the BBSM Server for Timed Internet Access. You will also change the Access Charges for billing purposes. Lastly, you will test your configuration from your client notebook to access Web, FTP , Video and VPN.

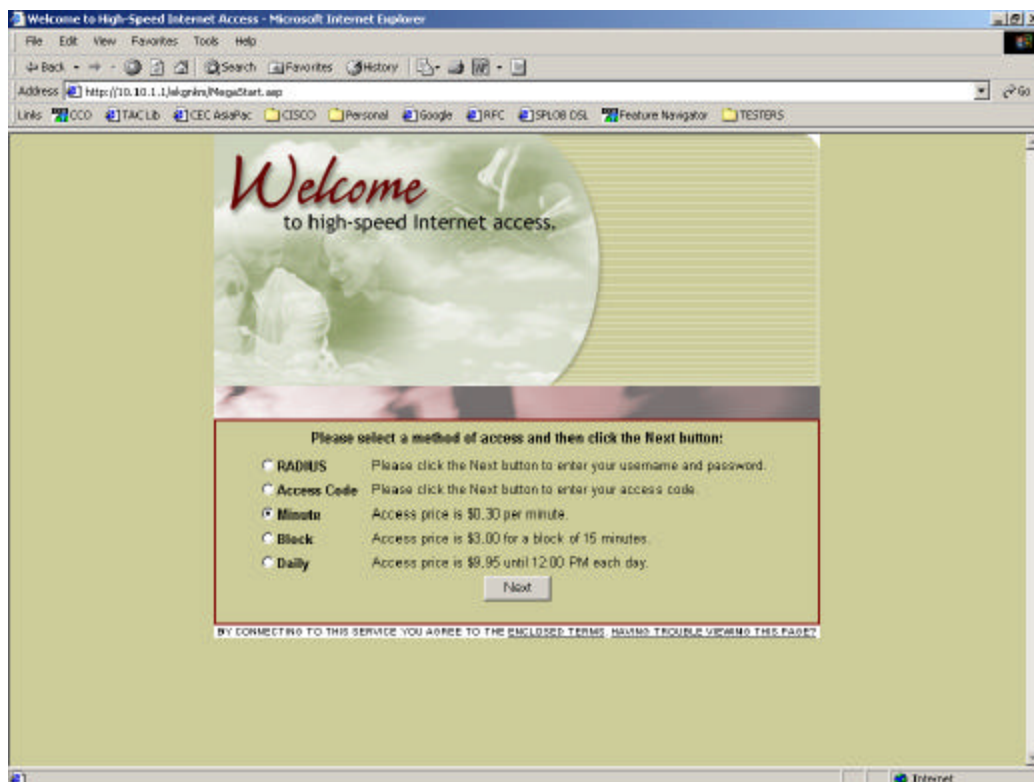
Objectives

Upon completion of this lab, you will be able to:

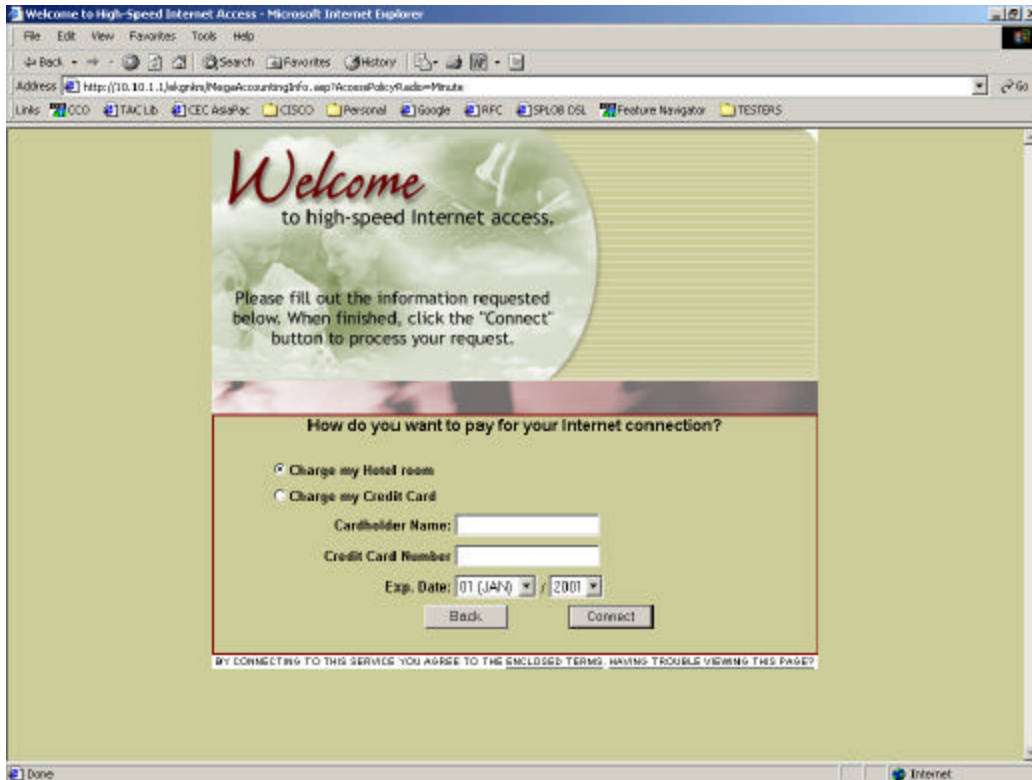
- Configure the BBSM 5.0 Server with Timed Internet Access and also be able to change the Access Charges for billing purposes.

Task One: Configure BBSM with Access Codes Authentication

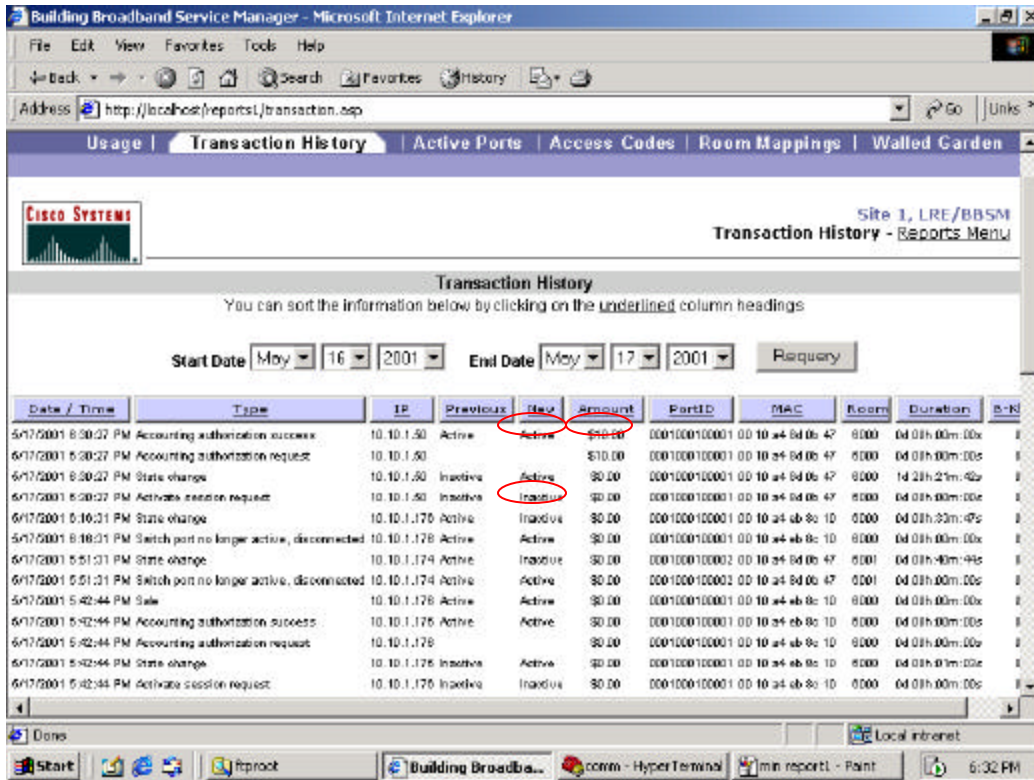
1. From the client notebook, open up browser and select **Minute** radio button. Click Next.



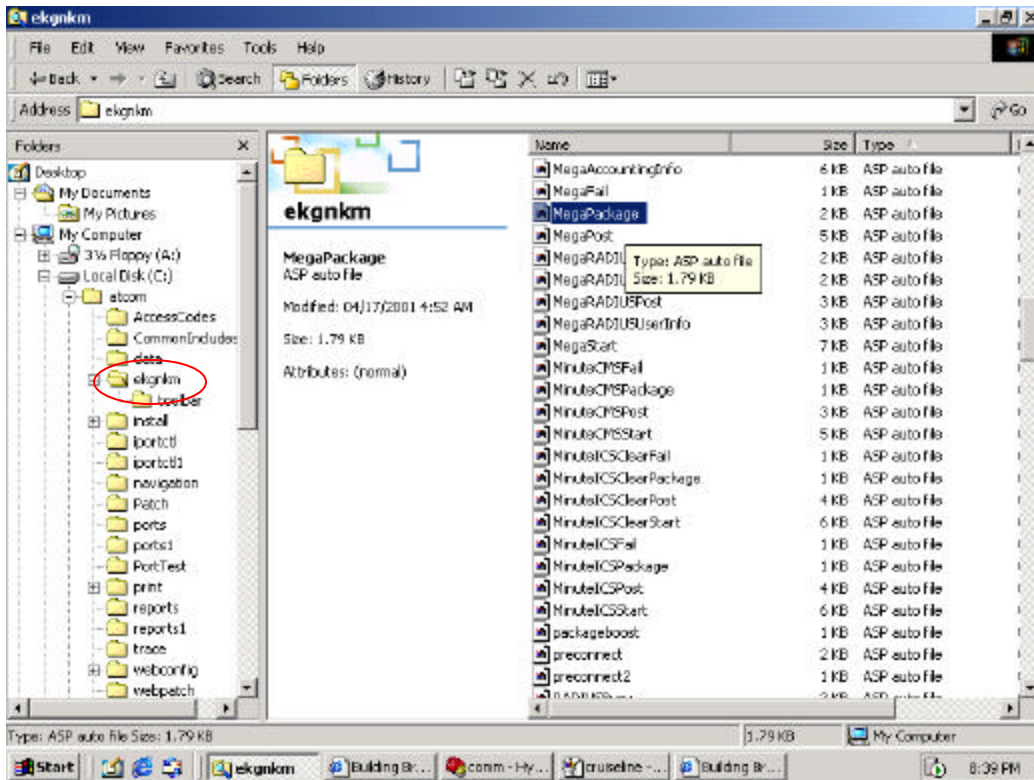
2. Select **Charge my Hotel room** and **Connect**.



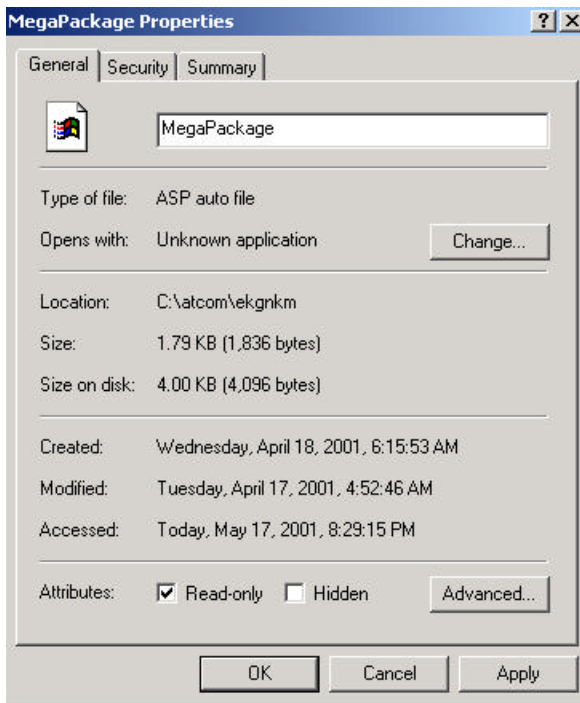
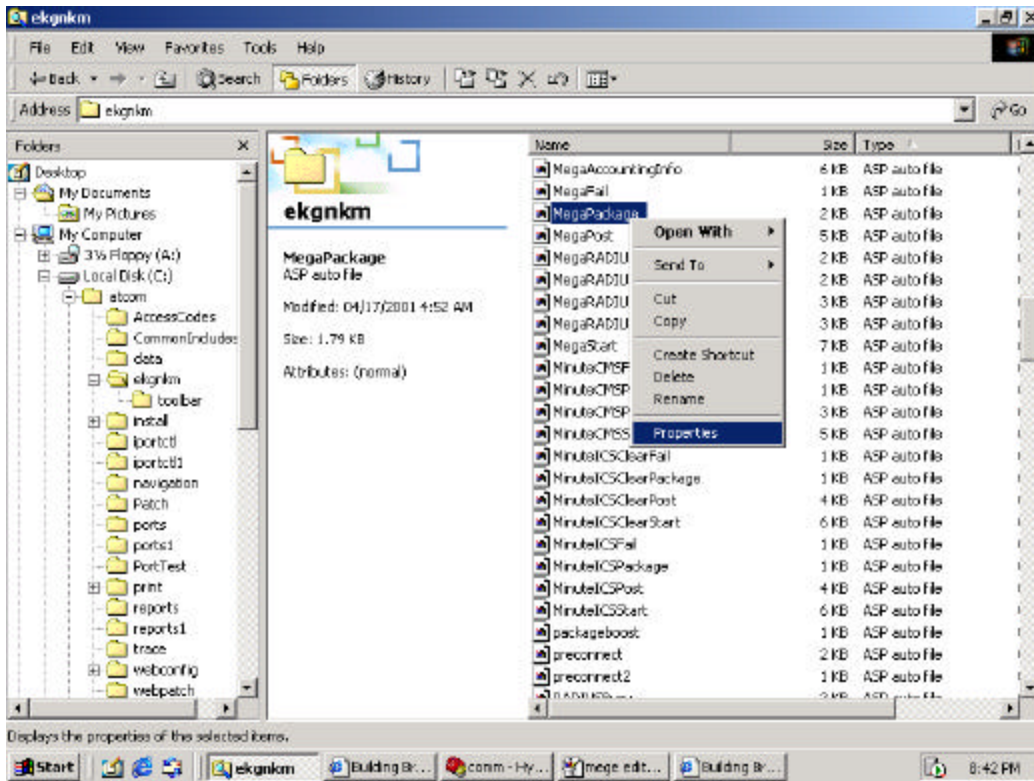
3. From the BBSM server , open the browser and click on Reporting Pages under Reports -> Transaction History tab. Note again the state change and the amount charged is \$10 (approval amount) and per minute charge (\$0.30/minute) == DEFAULT SETTING.



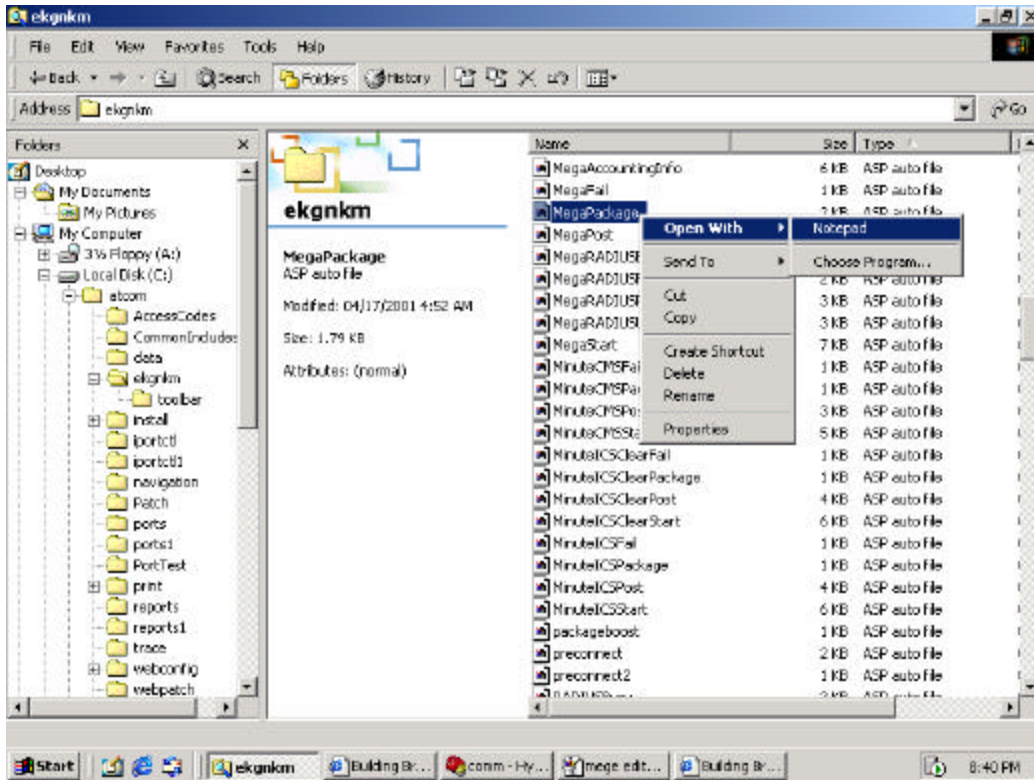
4. On the BBSM server, open up Windows Explorer and goto `c:\atcom\ekgnkm`.



5. Right click **MegaPackage.asp** -> **Properties** and uncheck the Read-only checkbox from the Attribute



6. Right click the file again and open with Notepad to edit it.



7. Note the **Approval amount = 10** and **MinutePrice = 0.3**. Change ApprovalAmount = 5 and MinutePrice = 0.2 and save the file.

```

MegaPackage - Notepad
File Edit Format Help
<%
    var strPageToCheck      = "Mega";

    var dApprovalAmount    = 10.00;
    var dBlockDurationMinutes = 15;
    var dBlockPrice        = 3.00;
    var dMinutePrice       = 0.30;
    var dDailyPrice        = 9.95;

    // use the strsessionBoundary variable to control the checkin-to-
    // cycle. The daily access policy uses this variable to determi
    // session boundary occurs. You can leave it blank for the ses
    // to be 24 hours from the start of the session. If you specif
    // session boundary occurs at that time, regardless of session :

    var strsessionBoundary = "12:00";

    // Use the bPostAtStart variable to control when the daily acce
    // performs the accounting function for the session. If this v.
    // true, the daily access policy will perform the accounting fun
    // the start of the session and at each session boundary. If tl
    // is false, the daily access policy will perform the accountin
    // at each session boundary and at the end of the session.

    var bPostAtStart = true;
  
```

8. Repeat Step 1 – 3 again and note the changes now. You've successfully changed the charges.